



ASH
CONSTRUCTION
GROUP

ETE & ETM Case Study

www.ash-cg.com

 01843 593268

"to inspire future generations by keeping the world on track"

ASH Construction Group undertake works in the E&P Sector of the rail infrastructure across the UK.

Our highly skilled, motivated and professional staff have ability to deliver projects to a safe and high quality standard and are trained in DCCR Competence.

We have expertise to deliver a wide variety of ETE & ETM services such as:-

- Power Supply Enhancement and Re-enforcement.
- High & Low Speed Ramp Formation.
- Negative Return and advance Plate Replacement.
- New Station Build.
- Re-modelling.
- Installation & Replacement of Insulators
- DC Track Feeder Replacements.
- Conductor Rail Guard Boarding & Shroud Installation.
- Track Renewals.
- DC Lug Replacement.
- TD & CTS Installation.
- Negative Bonding.
- Pre-curving of Rail (Crowing).

We are also able to provide services for:-

- HV Assessments and HV Competent persons duties.
- Engineering Support including Project Engineer and CRE duties.
- Dc assessments including conductor rail wear surveys, dilapidation and condition reports.

Feltham Depot

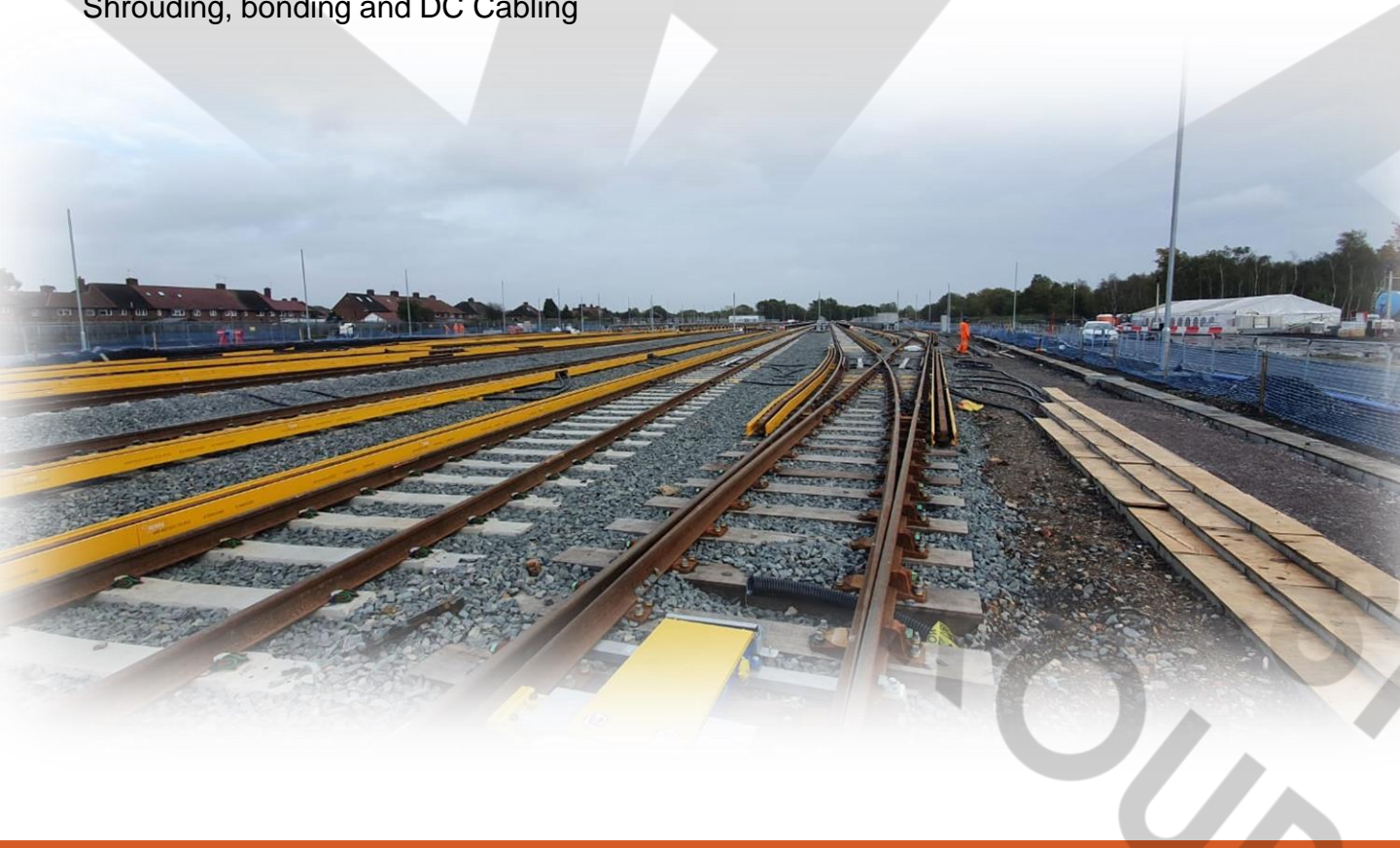


Client: Volker Rail

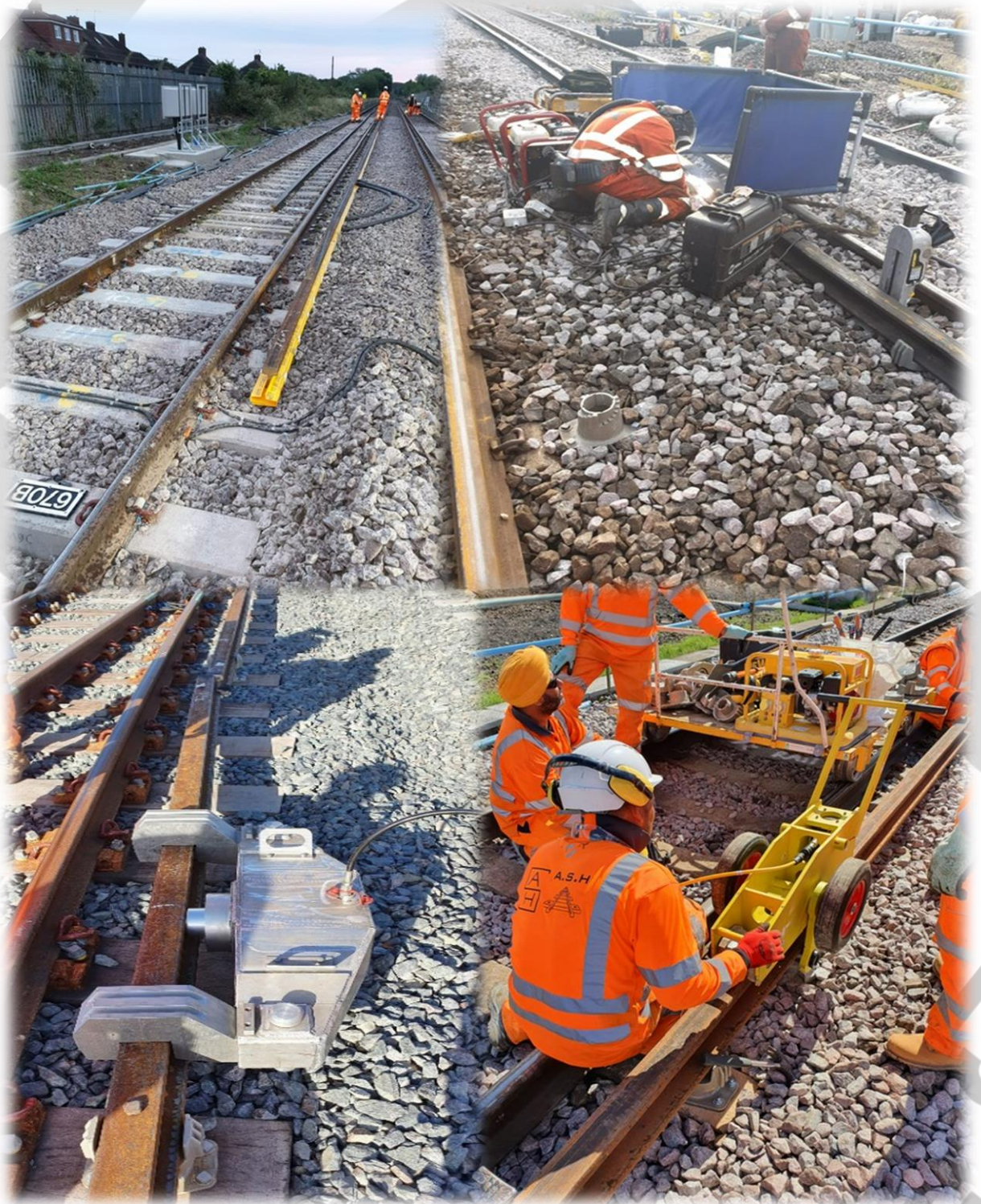
Description of services: Feltham Depot Project consisted of the installation of 10 new sidings roads long enough to enable the stabilisation of 10 car trains.

ASH CG was responsible for the installation of the conductor rail, including all the main line modifications to allow trains to enter and exit the new sidings.

Works consisted of the installation of new insulator pots, installation of conductor rail, formation of new high & low speed ramps, installation of Rehau Guard boarding and Shrouding, bonding and DC Cabling



Feltham Depot



"to inspire future generations by keeping the world on track"

Client: OSL Global

Description of services: Installation of a new loop line to accommodate additional trains on the Isle of Wight at Brading Station and the renewal of the Platforms and Permanent Way at Shanklin Station.

ASH CG was responsible for the installation of the conductor rail, including all the main line modifications to allow the new loop line installation.

Works consisted of the installation of new insulator pots, installation of conductor rail, formation of new high & low speed ramps, installation of Rehau Guard boarding and Shrouding, bonding and DC Cabling



Isle of Wight, Brading Loop Line



UP
S

"to inspire future generations by keeping the world on track"

Gatwick, Re-Modelling



Client: OSL Global

Description of services: Installation of new S&C lay out to accommodate the remodelling of Gatwick Station including the installation of new TDS', diversion of existing feeder cables and negative cables, modification of existing conductor rail layout, new insulator pots, formation of new high & low speed ramps, installation of Rehau Guard boarding and Shrouding, bonding and DC Cabling



"to inspire future generations by keeping the world on track"