



ASH

CONSTRUCTION
GROUP

WHO WE ARE



Established in 2013, ASH Construction Group are a leading privately-owned, Railway Specialist with offices in Kent, London and Birmingham. We deliver expert project management, construction, engineering and maintenance solutions for Network Rail and light Rail systems such as Docklands Light Railway.

Our focus is delivering a safe, sustainable service with an open, collaborative approach, enabling us to reliably deliver projects Nationwide

We are supported by a team of highly experienced staff specialising in Rail schemes alongside an exceptional Building and civil engineering capability.



Tony Allday Labour Director

Tony has over 20 years experience within the construction industry. A highly organised and hardworking professional, Tony is responsible for Labour and plant across the company



Karl Stocker
Civils Director

Karl has over 20 years' experience within the construction industry. In the last 15 years Karl has successfully managed multiple station upgrade and extension projects all over the southeast



Steve Horigan
Managing Director

Steve has extensive rail systems knowledge gained from over 25 years in the industry. He is passionate about people development, operational safety, and the delivery of quality products



John Burn
National Delivery Director

With over 35 years of proven experience throughout the U.K and Australia. John's expertise brings a wealth of experience from both on and off the track



CORE VALUES

“at the heart of our business”

Being Supportive

We always try to be understanding, consider the situation from the employee's perspective and show empathy and flexibility

Innovation

We embrace ideas and create environments in which our employees are given the tools and resources to challenge the status quo, to innovate & overcome limitations

Trust

Always being reliable and doing what you say you're going to do, our word means something you can believe in



Leading by Example

We always lead by example to guide others, inspiring them to do the same as you

Organisation

Always keeping track of what you need to accomplish, systematically working to increase our effectiveness and help us become more successful



SAFETY - OUR NUMBER ONE PRIORITY

We are proud of our excellent Health and Safety record and we believe in the principle that safety and performance go hand in hand. Our absolute commitment to safety shows through management leadership and the positive behavioural safety attitudes demonstrated by our people, showing that safety is integral to everything that we do

- ✓ **Leading by example and speaking up about unsafe conditions**
- ✓ **Being free to contact our management team for support**
- ✓ **To Stop work, reassess the situation and propose safer solutions**
- ✓ **Challenge each other when we feel something isn't right**



Our health & safety management accreditations

- ✓ **RISQS**
- ✓ **ISO 45001**
- ✓ **Construction Line Gold**
- ✓ **CHAS** CONSTRUCTION GROUP

Considerate Constructor National Company award

Bronze winner 2015 for safety and environment

& the Performance beyond compliance award in 2014

SAFETY FIRST



SUSTAINABILITY & ENVIRONMENT

Added Value is our approach to managing our economic, environmental and social impacts as almost everything we do has an impact on the environment.

Sustainability simply has to be a major focus for us because in construction we can have a lasting effect on the world in which we live.

We recognise the impact we have on the local economy and on those communities and as a forward-thinking organisation we are increasingly setting the bar higher by:

- ✓ **Being acutely aware of our impact upon the environment we act to minimize any negative effects of our activity and always seek to make full use of sustainable materials and methods**
- ✓ **Striving to recycle all of our construction waste and we have established facilities at our offices to separate waste materials for recycling in accordance with our Environmental Management Systems**
- ✓ **We are committed to the communities which provide our direct workforce. Whether it's clearing vegetation during project groundworks, or purchasing a new vehicle, the decisions we make have a wide range of impacts on the environment**

Accredited to ISO 14001 and having launched our 25 by 25 strategy, aiming to reduce energy consumption by 25% by 2025



QUALITY

ASH Construction Group is a quality driven organisation with a corporate mission to provide innovative services and Customer Focus in the Rail & construction industry.

Quality and continuous improvement in all areas of service are central to our company ethos which is reflected in all operational areas.

ASH Construction Group are accredited to ISO 9001 and ensure that our objectives are embedded within our company culture and business plans across our management team

Our policy is to provide a level of service and focus that exceeds our customers' expectations and delivers complete customer satisfaction ensuring we follow precise standards and methodologies to deliver our work.



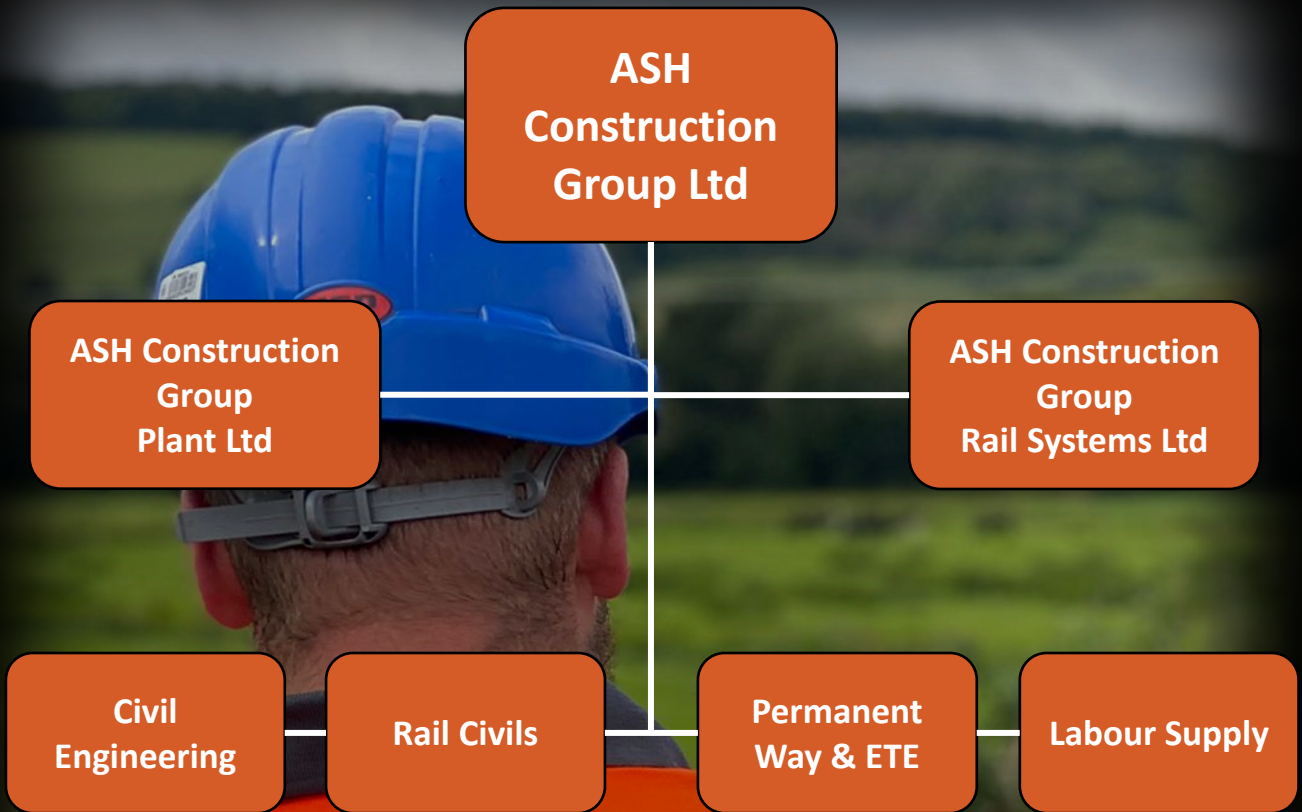
ACCREDITATIONS



- ✓ **RISQS-** 5 Star Audited
- ✓ **ISO 9001 2015-** Quality Management Systems
- ✓ **ISO 14001 2015-** Environmental Management Systems
- ✓ **ISO 45001 2018-** Occupational Health And Safety Management Systems
- ✓ **Construction Line Gold-** Occupational Health And Safety Management Systems
- ✓ **CHAS-** Contractors Health And Safety Assessment Scheme
- ✓ **ICATS-** Industrial Coating Applicators Scheme
- ✓ **Builders Profile-** Premium
- ✓ **Supply Chain Sustainability School-** Bronze Badge
- ✓ **CIRAS-** Confidential Reporting For Safety
- ✓ **Considerate Constructor Scheme-** National Company Award Winner 2015



WHAT WE DO



WHAT WE DO



PERMANENT WAY


At ASH Construction Group we have comprehensive knowledge of Railway Construction, renewal and replacement techniques. Our teams have over 40 years of experience on high-speed main Network Rail lines, Light Railways such as DLR, London overground commuter routes, freight lines, depots, sidings and private Heritage locations

We can undertake all aspects of Permanent Way, 3rd Rail ETE/ETM projects; from component exchange to the highest technical levels of mechanised on-track machine construction



WHAT WE DO

PERMANENT WAY

- 
- Plain line
 - Switches and crossings
 - Track slab construction
 - Track realignment schemes
 - Re-sleepering/re-timbering
 - Cable management sleepers
 - CRE & Technical advice
 - Rail Transposition & Re-railing
 - IBJ Installation and Recovery
 - Stressing & Tamping
 - Track Hand back L4 up to 125mph
 - Critical Rail Temperature (CRT) & Track Monitoring
 - Management of Temporary Speed Restrictions



WHAT WE DO



CONDUCTOR RAIL ELECTRIC TRACK EQUIPMENT (ETE/ETM)

Installations/Renewals/Maintenance

ETE Cable and Equipment Installation

DC Lug Replacement

Negative Bonding

High & Low Speed Ramp Formation

Pre Curving Rails



www.ash-cg.com

WHAT WE DO

CONDUCTOR RAIL

ELECTRIC TRACK EQUIPMENT (ETE/ETM)

Conductor rail shrouding

Conductor Rail Guard boarding

Installation of new and re-instatement of insulator

Insulator & Wear Gauge Inspections

Provision of HV Assessments & HV Comp

Rail Fish Plate Jointing



WHAT WE DO

RAIL CIVILS

Platform Reconstruction

Level Crossings

Under Track UTX and Road Crossings

Tactile & Copping stone installation and re-alignment

Installation of cable troughs/routes

Drainage

Brickwork and Masonry

Industrial Painting and Blasting (ICATS)

Building Decorating and repairs

Diamond Core Drilling and Grouting



WHAT WE DO

LABOUR SUPPLY

WE PROVIDE

ENGINEERING AND TECHNICAL

- Site Engineers/Managers
- Civil Engineers
- Track Hand Back Engineers
- Stressing Engineers
- Planning
- CRE Role
- Supervisors

TRADESMEN

- Bricklayers
- Shuttering Joiners/Chippies
- Steel Fixers
- Concrete finishers

MACHINE AND PLANT OPERATIVES

- Excavator
- Forward Tipping Dumper
- Telehandler

SAFETY CRITICAL

- PTS
- ETE/ETM Installers
- PTS Track induction Tr00
- COSS
- Lookout
- Protection Controllers
- Level Crossing Attendants
- Strapman
- Hand Signaller
- Machine Controller
- Crane Controller
- Engineering Supervisor



OUR LOCATIONS



We can be contacted seven-days a week, please call or email
for further information



Midlands Office

0121 2710 660

Fairgate House,

205 Kings Road

Tyseley, Birmingham

B11 2AA

Cardiff Office

Office D

Business Development Centre

Main Avenue

Treforest Industrial Estate

Terforest

CF37 5UR

Head office

Bourne House, 475 Godstone Rd,

Whyteleafe CR3 0BL

01883 621 041

Accounts

Unit 9 The Oaks

Manston Business Park

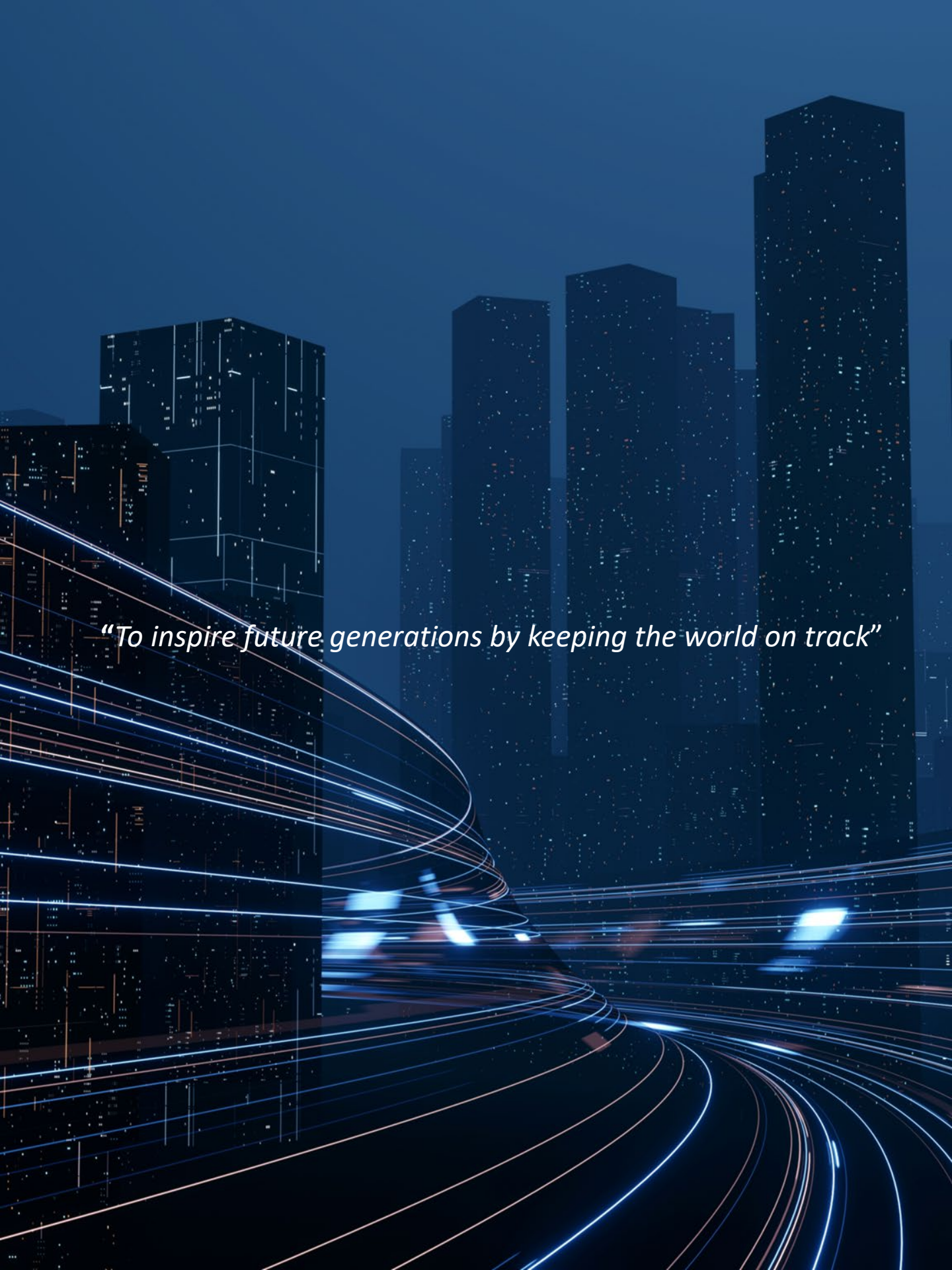
Ramsgate

Kent CT12 5FN

01843 593268



www.ash-cg.com



“To inspire future generations by keeping the world on track”